



# TALBOT SOIL CONSERVATION DISTRICT

# NEWSLETTER

June 2020

Volume 20, Issue 2

## Farmers in Maryland Can Now Apply for Financial Assistance through USDA's Coronavirus Food Assistance Program

Agricultural producers can now apply for USDA's Coronavirus Food Assistance Program (CFAP), which provides direct payments to offset impacts from the coronavirus pandemic. The application and a payment calculator are now available online, and USDA's Farm Service Agency (FSA) staff members are available via phone, fax and online tools to help producers complete applications. The agency set up a call center in order to simplify how they serve new customers across the nation.

Applications will be accepted through August 28, 2020. Through CFAP, USDA is making available \$16 billion for vital financial assistance to producers of agricultural commodities who have suffered a five-percent-or-greater price decline due to COVID-19 and face additional significant marketing costs as a result of lower demand, surplus production, and disruptions to shipping patterns and the orderly marketing of commodities.

Producers can download the CFAP application and other eligibility forms from [farmers.gov/cfap](http://farmers.gov/cfap). Also, on that webpage, producers can find a payment calculator to help identify sales and inventory records needed to apply and calculate potential payments.

Additionally, producers in search of one-on-one support with the CFAP application process can call 877-508-8364 to speak directly with a USDA employee ready to offer assistance. This is a good first step before a producer engages the team at the FSA county office at their local USDA Service Center.

### Additional Commodities

USDA is also establishing a process for the public to identify additional commodities for potential inclusion in CFAP. Specifically, USDA is looking for data on agricultural commodities, that are not currently eligible for CFAP, that the public believes to have either:

1. Suffered a five percent-or-greater price decline between mid-January and mid-April as a result of the COVID-19 pandemic,
2. Shipped but subsequently spoiled due to loss of marketing channel, or
3. Not left the farm or remained unharvested as mature crops.

**For further information, please call the Talbot County Farm Service Agency at 2410-822-1344 extension 2.**



## Talbot SCD Office Update

**Due to the COVID-19 pandemic, the Talbot SCD office is currently CLOSED to the public and is appointment only until further notice.**



Like us on Facebook "[Talbot Soil Conservation District](https://www.facebook.com/TalbotSoilConservationDistrict)"

Follow us on Twitter at [@talbotscd](https://twitter.com/talbotscd)



## Office Space Available at the Talbot Agricultural Service Center

The Talbot SCD currently has two vacant suites available in our Agricultural Service Center located on Mary's Court in Easton.

Current tenants are the Talbot Soil Conservation District, USDA Farm Service Agency, UMD Extension, and Maryland Department of Agriculture Nutrient Management.

Both spaces are being offered at \$13/sq. ft. Suites are adjoining, so they can be rented separately or together.

Suite 5 - 1,575 sq. ft.—Interior building access

Suite 6 - 1,826 sq. ft.—Interior and exterior building access

Visit <http://www.bensonandmangold.com> and search for 28577 Marys Court or directly enter [https://bensonandmangold.com/idx/mls-mdta137914-28577\\_marys\\_ct\\_suite\\_6\\_easton\\_md\\_21601](https://bensonandmangold.com/idx/mls-mdta137914-28577_marys_ct_suite_6_easton_md_21601) or [https://bensonandmangold.com/idx/mls-mdta137912-28577\\_marys\\_ct\\_suite\\_5\\_easton\\_md\\_21601](https://bensonandmangold.com/idx/mls-mdta137912-28577_marys_ct_suite_5_easton_md_21601) for more information including suite layouts.

Contact Shawn Smith at 443-746-4308 or [shawn.smith@maryland.gov](mailto:shawn.smith@maryland.gov).



## 2020 Land Poster Contest Winners Announced

Local schools throughout Talbot County participated in the 30th Anniversary Land Poster Contest presented by the National Association of Conservation Districts. This year's theme was *"Where would we BEE without pollinators?"*

Poster winners were announced on April 25th, Earth Day!

### **10th-12th Grades**

1st Place - Tori G. (St. Michaels Middle/High)

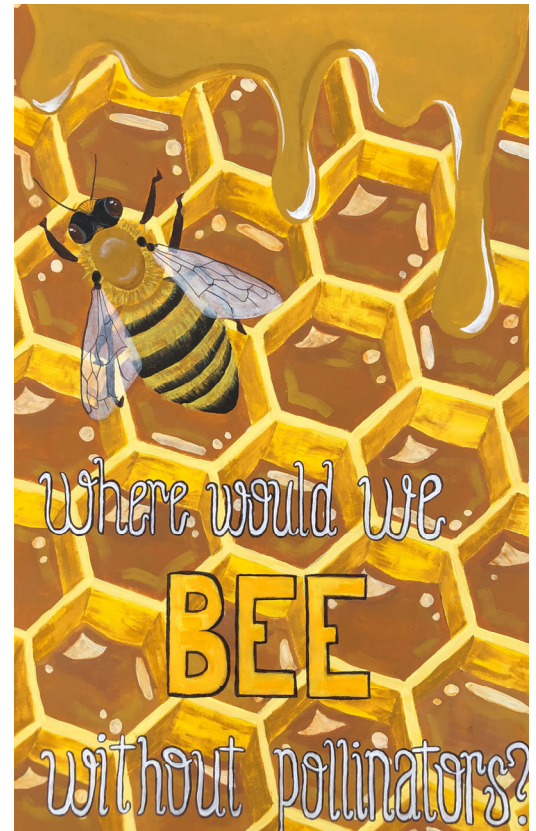
2nd Place - Kaila R. (St. Michaels Middle/High)

3rd Place - Georgia K. (St. Michaels Middle/High)

No other submissions for K—9th grades due to COVID-19.

1st place winners of the county-wide contest are now entered in the Maryland Association of Soil Conservation District's Poster Contest held in July 2020. If entries are winners at the State contest they will be entered in the National Association of Conservation District's Poster Contest held in January/February 2021.

To view all of the winners visit our website at <http://www.talbotscd.com/>.



# What is a Soil Conservation & Water Quality Plan and why should I have one for my farm?

**Soil Conservation and Water Quality Plans** (SCWQP) or **Conservation Plans** are a valuable tool for farmers and landowners to manage resources and improve profitability.

*A conservation plan is a working document designed to fit each individual farmer's needs while protecting and conserving their soil and water resources.*

A conservation plan folder contains:

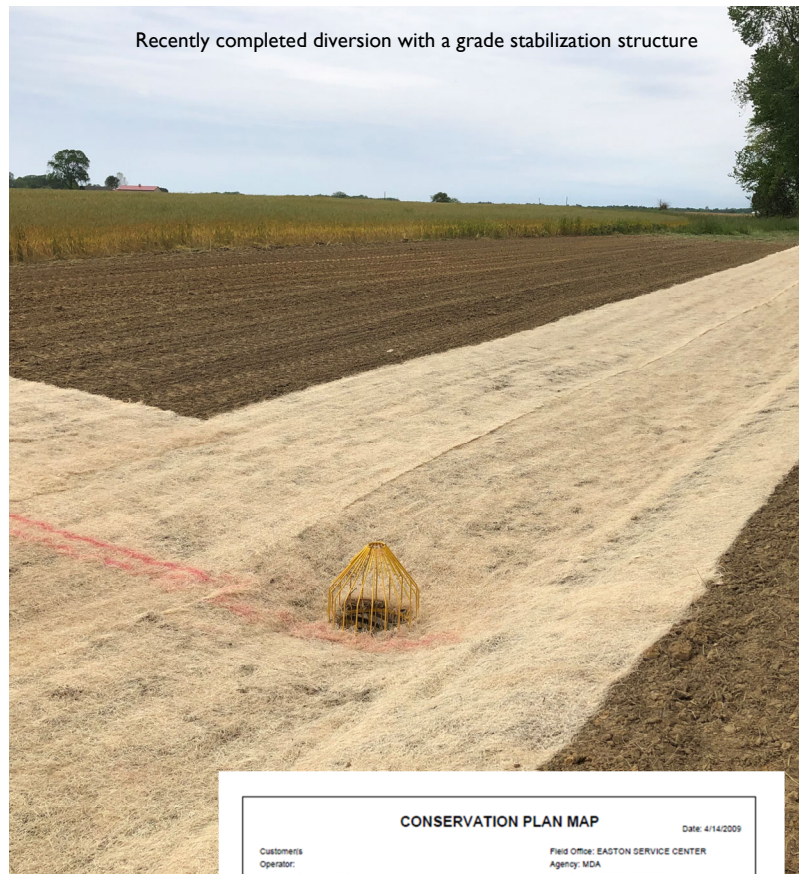
- Aerial photo of the farm which includes property boundaries, topography, current and proposed BMPs, and possibly other resource items;
- A written record of the landowners decisions regarding cropping sequences, residue management, and nutrient management, with a plan for implementation and;
- A map showing soil types and boundaries along with descriptions and capability classes showing suitability for cropland, forestland, and wildlife habitat.

**Conservation plans are not mandatory unless all or part of the farm falls within the Chesapeake Bay Critical Area**, or you are applying for or currently participate in an agricultural land preservation program, or participate in any state or federal cost share programs.

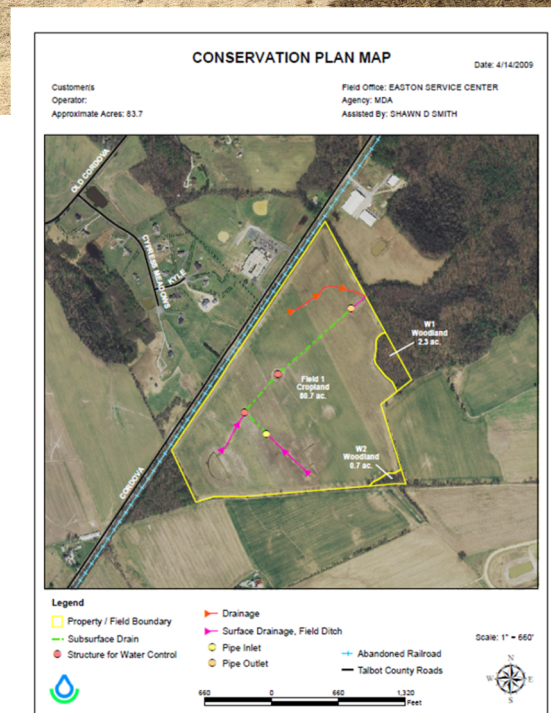
If you are interested in developing a conservation plan for your farm, please contact one of the conservation planners to set up an on-farm visit. The planner will need to walk the farm and take notes on current farming practices and identify any resource issues which may need to be addressed. These plans are free and should be updated at least every 10 years.

**If you are unsure if your plan is current or would like to schedule a farm visit, please contact one of our planners:**

- ⇒ Steve Spielman, [steve.spielman@maryland.gov](mailto:steve.spielman@maryland.gov) - 443-746-4312
- ⇒ Levin Schwaninger, [levin.schwaninger@maryland.gov](mailto:levin.schwaninger@maryland.gov) - 443-746-4315
- ⇒ Scott Nordhoff, [scott.nordhoff@nacdnet.net](mailto:scott.nordhoff@nacdnet.net) - 443-746-4318
- ⇒ Rocky Donovan, [rocky.donovan@maryland.gov](mailto:rocky.donovan@maryland.gov) - 443-746-4303



Recently completed diversion with a grade stabilization structure



## Recent Conservation Assistance

The Talbot SCD recently provided cost-share assistance, through the Maryland Agricultural Cost-Share Program (MACS), for an erosion control project in the Cordova area.

A large gully formed on the edge of the field which delivered sediment into a nearby creek. NRCS and SCD technicians designed a cost effective solution which consisted of a new grassed waterway/diversion, with a large grade stabilization structure and rock lined outlet.

If you are interesting in learning more our financial assistance programs contact one of our conservation planners for an environmental evaluation of your farm/property.

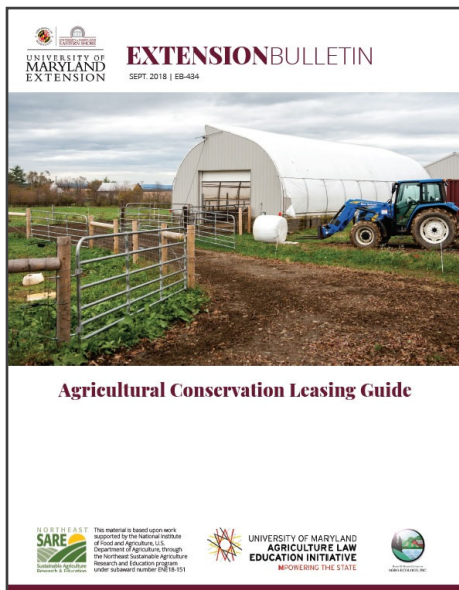


## Welcome to our new NRCS Area Engineer, Heath Miller

NRCS and the Talbot SCD would like to welcome Heath Miller, the new Area Engineer for the Eastern Shore. Heath will be stationed in Easton, and is an excellent addition to the NRCS staff. Heath graduated from University of Maryland's School of Engineering in December of 2013. While in college, he interned with NRCS working under Ann Baldwin. He briefly worked for NRCS after graduation before leaving and joining Lane Engineering. In 2017, Heath joined the Maryland State Highway Engineering team in Baltimore. He received his Professional Engineer (PE) status in 2018. Heath is excited to be rejoining the NRCS Engineering staff.



Heath Miller, NRCS Area Engineer



## Agricultural Conservation Leasing Guide from UMD-Extension

If you are a landowner who leases your land to a farmer you should download the free **Agricultural Conservation Leasing Guide** developed by the University of Maryland Agricultural Law Education Initiative (ALEI) and the Hughes Center. This guide is meant to help farmers and landowners use leases as a tool to not only protect their business interests but to also implement stewardship planning and conservation practices on leased land.

For more information and to download the guide, visit <https://agresearch.umd.edu/agroecol/educationoutreach/agricultural-conservation-leasing>.

## Cover Crop Updates

- **Sign-up for 2020-2021** Maryland Agricultural Cost-Share Program (MACS) Cover Crop Program to be in late June. Past participants will receive a text message when more information is available.
- The **2019-2020 Cover Crop program** had **95** applications with a total of **51,582.9 acres** planted. A recent National Agricultural Statistics Service (NASS) Ag Census found that Talbot has an estimated 69,060 acres of cropland planted into corn or soybeans. Therefore **74.6%** of total eligible acres were enrolled into the 2019-2020 program.



## Talbot SCD Board of Supervisors

### About the Board

The Talbot SCD Board of Supervisors provides overall supervision and sets policy assuring that the district performs tasks required by law and memorandums of understanding. Supervisors are appointed to represent farming, forestry, wildlife, suburban/urban interests, and other natural resource interests in a district.

Appointments are made by the following groups, which each term five (5) years:

- Talbot County Government
- Talbot County Farm Bureau
- Talbot County Cooperative Extension
- Two supervisors are appointed by the SSCC from among residents of Talbot County.

### Supervisors

- John Swaine III, Chairman (County Appointee)
- Lewis Smith, Vice Chairman (At-large)
- Kyle Hutchison, Treasurer (At-large)
- Lemmie Swann, Member (UMD Extension)
- Sarah Everhart (Farm Bureau)
- Shannon Dill (Extension Service), Secretary
- Billy Foster, Associate
- Raymond Harrison III, Associate
- Norman Fike, Honorary Member



**TALBOT SOIL  
CONSERVATION DISTRICT**

28577 Marys Court, Suite 3  
Easton, Maryland 21601

Phone: 410-822-1577 x 3  
E-Mail: talbotscd@gmail.com

**CONNECT WITH US**

Website <http://www.talbotscd.com>

[Twitter @TalbotSCD](#)

[Facebook.com/TalbotSCD](https://www.facebook.com/TalbotSCD)

## Talbot SCD Field Staff

Shawn D. Smith, District Manager—[shawn.smith@maryland.gov](mailto:shawn.smith@maryland.gov)

John (Jack) L. King Jr., District Conservationist (*Talbot and Caroline*)—[jack.king@md.usda.gov](mailto:jack.king@md.usda.gov)

L. Dale Willson, Secretary—[dalel.willson@maryland.gov](mailto:dalel.willson@maryland.gov)

Laura Eddy, Soil Conservationist—[laura.eddy@usda.gov](mailto:laura.eddy@usda.gov)

Annie Rossi, Soil Scientist (*Eastern Shore*)—[annie.rossi@md.usda.gov](mailto:annie.rossi@md.usda.gov)

Heath Miller, Area Engineer (*Eastern Shore*)—[heath.miller@usda.gov](mailto:heath.miller@usda.gov)

Katie Biggs, Wildlife Biologist (*Eastern Shore*)—[katherine.biggs@usda.gov](mailto:katherine.biggs@usda.gov)

Kim Reynolds, Program Support Specialist (*Talbot and Caroline*)—[kimberly.reynolds@usda.gov](mailto:kimberly.reynolds@usda.gov)

Rocky L. Donovan, Agricultural Resource Conservation Specialist—[rocky.donovan@maryland.gov](mailto:rocky.donovan@maryland.gov)

D. Scott Nordhoff, Agricultural Resource Conservation Specialist—[david.nordhoff@md.nacdnet.net](mailto:david.nordhoff@md.nacdnet.net)

Levin H. Schwaninger Jr., Agricultural Resource Conservation Specialist—[levin.schwaninger@md.nacdnet.net](mailto:levin.schwaninger@md.nacdnet.net)

Steve W. Spielman, Agricultural Resource Conservation Specialist—[steve.spielman@md.nacdnet.net](mailto:steve.spielman@md.nacdnet.net)

Kayla M. Meredith, Soil Conservation Associate—[kayla.meredith@maryland.gov](mailto:kayla.meredith@maryland.gov)

Brandon R. Zinter, Soil Conservation Associate—[brandon.zinter@md.nacdnet.net](mailto:brandon.zinter@md.nacdnet.net)