



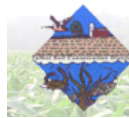
FALL EDITION

Special points of interest:

- CSP signup to start possibly in December— signup early.
- Cover Crop planting deadline for the \$25.00 per acre payment is Nov. 5 and must be certified by Nov. 14.
- CSP program informative meeting, Thursday, November 17, 2005 @ 7 PM – 9 PM at the Easton Firehouse

Inside this issue:

- Talbot SCD welcomes three new employees **2**
- Cover Crop Deadlines **2**
- Continued story on Conservation Security Program (CSP) **3**
- WHIP signup Information **4**
- EQIP signup slated for November/December **4**
- Contact Us **4**
- Useful Links **4**



Talbot Soil Conservation District

TRADEWINDS

Volume I, Issue I

November 2005

2006 Conservation Security Program

Program Announcement:
Teresa Kampmeyer— District Conservationist

Last year the north-western part of Talbot County (1/3 of it) was included in the Conservation Security Program (CSP) program under the Chester-Sassafras watershed. We had a successful signup that resulted in 22 contracts and some very happy farmers! CSP is a voluntary program that provides financial and technical assistance to promote the conservation and improvement of soil, water, energy, plant and animal life on private working lands. Working lands include cropland, pasture, and grassland as well as some incidental land that is part of the Ag operation. The 2006 federal fiscal year began October 1, 2005. Plans are to have a new CSP watershed signup sometime in the very near future (possibly in December). Three new watersheds have been selected throughout Maryland and producers will have an opportunity to participate.

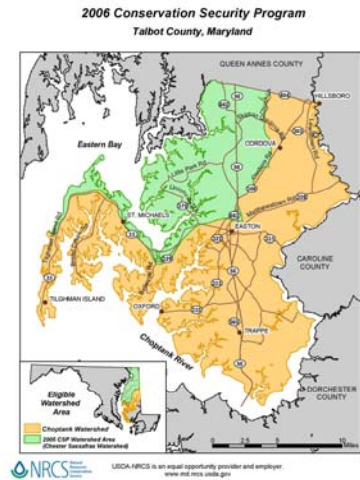
Selected watersheds for 2006 are the Choptank, Nanticoke, and the Patapsco – Liberty Reservoir. The Choptank watershed will take in the remaining farmland (2/3's) left in the county. Producers with the majority of their land inside these watershed boundaries have met the first criteria for eligibility in this program. Meetings have been set up to help explain this USDA program. They will be held at the following locations:

Monday, November 14, 2005 @ 7 PM – 9 PM at Caroline County 4-H Park in Denton, MD.

Tuesday, November 15, 2005 @ 7 PM- 9 PM at Maple Elementary School 5225 Egypt Road, Cambridge, MD.

Wednesday, November 16, 2005 @ 7 PM- 9 PM at Mardela Springs Firehouse in Mardela Springs, MD.

Thursday, November 17, 2005 @ 7 PM – 9 PM at the Easton Firehouse



See page 3 for an enlarged map and more on the 2006 Conservation Security Program (CSP) signup.

2005 Envirothon Results

The Talbot Soil Conservation District hosted and sponsored the 14th Talbot Envirothon on May 12, 2005. The contest was held at Pickering Creek Environmental Center.

Two teams from Ss. Peter and Paul H.S. competed in the event. The teams completed tests and conducted hands-on tasks in each of the five resource areas: Aquatics, Forestry, Soils, Wildlife, and this year's fifth issue – Preserving Cultural Landscapes.

Congratulations to the Humungus Fungus team who claimed first place and were named Champions of the 14th Talbot Envirothon. They earned the right to represent Talbot County at the Maryland Envirothon that was held June 21-23, 2005 at Harford Glen Environmental Education Center in Harford County. The MD Envirothon winning team will represent Maryland and advances to the Canon Envirothon which was held at Southwest Missouri State

University in Springfield, Missouri July 18- Aug. 24, 2005.

Prizes were awarded to each team member for high score in each resource area as well as for overall 1st and 2nd place.

Talbot SCD Welcomes Three New Employees

Talbot SCD has some new faces. Buddy Pinder, Mark Mason, and Corey Spies officially started on October 3. Mark replaces the position of long-time employee Paul Biddle who retired last year and Corey replaced Heather Beaven who was recently hired with NRCS in Caroline County.

In November we will also have the addition of Dave Wilson who will be transferring to Talbot from Harford County. Dave is a MDA Soil Conservation Engineering Technician and is transferring to Talbot to be closer to the family farm. He will start after the Thanksgiving Holiday.



Standing from left to right
Buddy Pinder, Mark Mason, Corey Spies

Buddy Pinder came on board with soil conservation as an EQIP, WHIP, and AMA grant planner/technician in February of this year. He shared the position between Talbot and Dorchester Counties before coming to Talbot full-time in October as a Soil Conservation Engineering Technician. Buddy came to us from The University of Maryland Cooperative Extension Office in Kent County where he was a Nutrient Management Consultant. Born and raised on the eastern shore, Buddy grew up working on a farm; agriculture and farming are still his primary interests. He currently resides in Kent County with his wife Gwen .

Mark Mason comes to Talbot County from Otter-Tail County in west central Minnesota where he worked as a NRCS technician for the six years, prior to that he worked for the Boise National Forest in Idaho as Fisheries and Hydrology and Forestry technicians for eight years. Mark was raised and worked on the family dairy farm which is now operated by his brother in western upstate New York. Mark and his family very happy to be living on the Eastern Shore, enjoying the many opportunities the area offers and to assist in the protection and enhancement of the areas natural resources.

Matthew "Corey" Spies graduated from the University of Maryland College Park in December 2003. The following January Corey started his career with Queen Anne Tractor, which is now Atlantic Tractor, and was the head of their commercial sprayer division. In August 2004 Corey decided to get closer to his farming roots and went to work for Norwich Fluids, Inc. to be a sales representative for the Talbot County area. He was then interested in a job with the soil conservation and came to work for the Talbot County Soil Conservation as a conservation planner to replace Heather Beaven who recently took a job with NRCS in Caroline County. Corey has been married since June 2004 to his wife Katie and they have a beautiful eight month old daughter



Did you know that there are more 18,000 soil series in the United States, each of which has specific qualities and reacts differently to use? And that the key determinant of whether soil quality is improved, restored, sustained, or degraded is management?

Office Closures:

SCD & NRCS offices will be closed the following holidays.

Nov. 11 – Veterans Day

Nov. 24 & 25 – Thanksgiving Day

Dec. 26- Christmas Day

Were Looking for the 2005 Cooperator of the Year



Last Year's Talbot County Soil Conservation District's Cooperator of the year was Eric and Holly Foster of Cordova .

Cover Crop Reminder:

The Cover Crop planting deadline for the \$25.00 per acre payment is Saturday November 5 and the cover crop must be certified by Monday November 14. Any questions regarding cover crop contact MDA Planner Levin Schwaninger here at the office or by calling 410-822-1583 ext. 116



CSP (continued from page 1)

You could potentially be eligible to participate in the new Conservation Security Program (CSP) if you can answer “yes” to the following questions that apply to your farm.

1. Do you have cropland, hay land, pastureland, vineyards, and/or orchards that are located within a watershed announced for CSP sign-ups in 2006?
2. Do you share in the risk of producing the crop or livestock on this land, and have control of some or all of the land you intend to re-enroll for at least 5 years? **NOTE: Landlords who receive only cash payments for renting the land are not currently eligible to apply for CSP on that acreage. The Operator (renter) of that land may apply however, but only if he/she has control on the land for the life of the CSP contract (5-10 years).**
3. Are your crop fields and pastures free from active gullies?
4. Do you have a nutrient management plan, and do you keep written records of your nutrient management activities for each field, such as yields, soil tests, and nutrients (including animal waste)?
5. Do you keep written records or documentation of your pesticide application and pest control methods for each field?
6. Do you use and follow a grazing plan, allowing for periods of complete rest during the growing season, and feed hay or grain or other forage replacements before pastures get short or when not growing?
7. Do livestock have limited or no access to streams and ponds?

If you have answered yes to all of these questions for all or part of your operation, you may wish to consider attending the CSP information meetings to find out what opportunities you may have in CSP. (See locations and dates on pg. 1)

NOTE: Portions of your farm or operation currently enrolled in the Conservation Reserve Program, Wetlands Reserve Program or Grassland Reserve Program are not eligible acres for the CSP program.

THE CHOPTANK WATERSHED

The Choptank watershed basin is approximately 509,000 acres

in size and is located in the Delmarva Peninsula. The Choptank River basin drains approximately 448,000 acres in Maryland, including portions of Caroline, Dorchester, Queen Anne’s, and Talbot counties in the middle of the eastern shore. Larger water bodies include the Choptank, Little Choptank, Tred Avon, Broad, Harris, and Tuckahoe Creeks.

Within the agricultural areas, there are approximately 781 farms in Maryland. Delaware has 115 farms in the watershed. The average farm size is 330 acres. Major agricultural crops produced are corn, beans, barley, wheat, and vegetables. Poultry production is an important industry in the watershed.



CHOPTANK WATERSHED

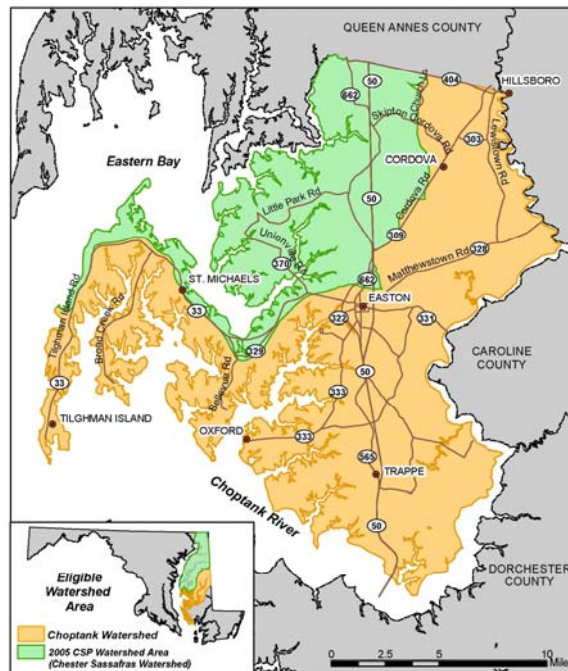
Land Cover/	Acres
Agricultural	259,840
Forested	147,840
Urban	40,320
Forest-land/	117,290

“Farm records showing conservation practices, cropping rotations, pesticides used, nutrient application rates, etc. will be required as part of the application process.”



The Choptank Watershed is 1 of 110 watersheds nationwide to be selected for the 2006 CSP signup. Only 3 watersheds were selected in Maryland.

2006 Conservation Security Program
Talbot County, Maryland



USDA-NRCS is an equal opportunity provider and employer.
www.md.nrcs.usda.gov

CONTACT US

TALBOT SCD
215 BAY STREET
EASTON, MD 21601-2733
(410) 822-1583 EXT.3
(410) 820-8919 -FAX

Field Staff

Craig S. Zinter-District Manager
Teresa Kampmeyer-District Conservationist
L. Dale VanZant-Secretary
Roy R. Scott-Soil Conservation Associate
Mark Mason-Civil Engineer Technician
Buddy Pinder-Soil Conservation Engineering Tech.
Bobby Gorski-Soil Conservation Planner
Levin Schwanger-Soil Conservation Planner
Jack King-Soil Conservationist
Corey Spies-EPA 319 Grant Planner
Jim Brewer-Soil Scientist
Charlie Hanner-Soil Scientist
Dale Foxwell- Erosion Control Reviewer

Board of Supervisors

John Swaine III-Chairman
S. Taylor Spies-Vice Chairman
Lemmie Swann-Treasurer
Kyle Hutchison-Member
Dan Palmer-Member
Shannon Potter-Extension Service Secretary
Norman Fike-Honorary Member
Jane Ward-Assoc. Supervisor

Internet Links

NRCS, Natural Resources Conservation Service
><http://www.nrcs.usda.gov>

USDA, Farm Service Agency (FSA)
><http://www.fsa.usda.gov>

MDA, Maryland Department of Agriculture
><http://www.mda.state.md.us>

DNR, Maryland Dept. of Natural Resources
><http://www.dnr.state.md.us>

MDE, Maryland Dept. of the Environment
><http://www.mde.state.md.us>

NACD, National Assoc of Conservation Districts
><http://www.nacdnet.org>

*Were on the web @
www.TalbotSCD.com*



WILDLIFE HABITAT INCENTIVES PROGRAM

The Wildlife Habitat Incentives Program (WHIP) is a voluntary program for people who want to improve and create wildlife habitat on their property. Non-profit groups and schools are also eligible to participate. In WHIP, USDA's Natural Resources Conservation Service provides technical assistance and up to 75% cost share reimbursement to establish or improve fish and wildlife habitat. If sufficient funds are available, state and local governments may apply for enrollment as well. WHIP is an avenue for landowners to take who are not eligible for other USDA programs.

In WHIP, a landowner can implement single conservation practices or a combination of several practices to form a larger project. Unlike the Conservation Reserve Program (CRP) and the Conservation Reserve Enhancement Program (CREP), the landowner does not have to own the property for a year, but only provide proof of control over the land for the length of the contract. Eligible practices in WHIP include warm season grass/wildflower meadows, tree/shrub plantings, tidal shoreline grass plantings, phragmites control, and shallow water impoundments for wildlife. In WHIP, the shallow water impoundments can be managed as plant and flood systems which are strictly prohibited in CRP and CREP.

The sign up period in FY2005 left the Talbot SCD with ten approved contracts totaling \$85,101. These contracts included shallow water impoundments, tree plantings, warm season grass plantings, phragmites control, and tidal shoreline grass plantings. We look forward to a continued interest in WHIP in FY2006. If you are ineligible for other USDA programs, consider WHIP as a way to enhance the wildlife habitat on your property. For more information please contact Bobby Gorski or Buddy Pinder at (410)-822-1583 ext 3.

ENVIRONMENTAL QUALITY INCENTIVES PROGRAM

Maryland plans to have a **signup in early December** for the Environmental Quality Incentives Program (EQIP). This year Maryland is going to be divided into 5 regions. Talbot County will be included in the Upper Shore region with Queen Anne's county north to Cecil County. Applicants will have practices ranked for funding based on practices that address resource concerns and environmental quality. EQIP is a voluntary program that offers financial and technical help to assist eligible participants to install or implement structural and management practices on eligible agricultural land.

Persons who are engaged in livestock, agricultural production, forest land or irrigation/nurseries may participate. EQIP may cost share up to 75 percent of the costs of certain practices. Incentive payments

may be provided for up to three years to encourage producers to carry out management practices they may not otherwise use with the incentive.

Practices EQIP has cost shared on in the past include: Pasture and Hay land planting, Waste Storage Facility, Closure of Waste Impoundments, Constructed Wetlands, Fencing, Forest Stand Improvement, Improvements to Irrigation Systems- micro-irrigation and irrigation system- sprinkler, Tail Water Recovery, Watering Facility (tank or trough), Pond Restoration, Cover and Green Manure Crop, Prescribed Grazing, Nutrient Management, and Integrated Pest Management. Please contact the District office if you are interested, need help, or have questions about EQIP or any other program.



"EQIP can help pay for the re-establishment of pasture grasses". Incentives are provided for the development and implementation of Prescribed Grazing plans. Other practices EQIP helps to cover the cost of are Cover and Green Manure Crop, Comprehensive Nutrient Management Plans, Waste Storage Facilities and Roof Runoff.

Wildlife Habitat Incentives Program